

# Clairo Cell GTP - Minipleat Box filters in plastic frame

CLAIRO CELL-GTP filters are the new generation type high efficiency mini-pleat box filters available in efficiencies F8 / MERV14, F9/MERV15 & H10/MERV16. These filters are designed to use in Gas Turbine Systems, VAV systems and Oil Mist Collection. The compact design, larger surface area and low initial resistance made it an ideal alternative to ordinary Bag filters & Box type filters of the similar efficiencies. The high burst resistance, low pressure drop and high dust holding capacity offered by the filter made it an ideal filter for extreme operating conditions.

## Clairon Models

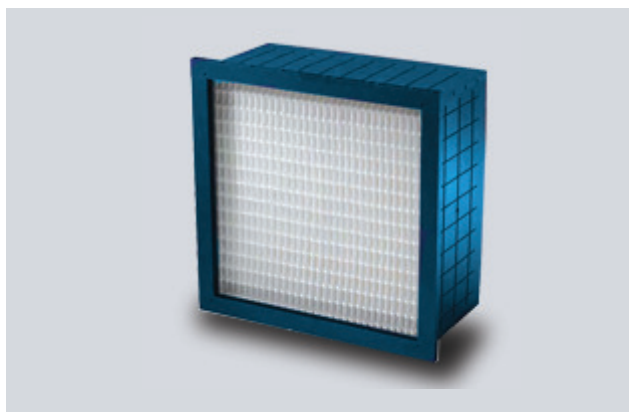
### Clairo Cell GTP

Mini pleat box style filters

Available in F8, F9 and H10 grades

Plastic frame with single, double or no header

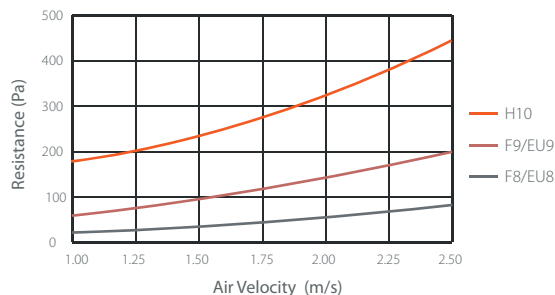
240mm deep minipleat pack used



## MEDIA FEATURES AND TECHNICAL DETAILS

100% Synthetic or Fiberglass filter media made from a modified meltblown process having graded fiber density ensuring coarse fibers upstream and fine fibers downstream is closely pleated with thermo-plastic bead separators which gives a unique V configuration to the pleats & accommodates a very large quantity of filter media. The mini-pleated media packs are arranged in a perfect V design & sealed to the enclosing frame made up of plastic. All filters will have two plastic protection grids on both sides. Each filter offers a very large media area and very low initial pressure drop than the conventional Bag and Rigid box filters. Various options are available like filters with no frames, single header and double header constructions.

Airflow vs. Resistance



## Selection Chart ▼

EFFICIENCY	Model	Filter Size	Rated Airflow	Initial PD	Model	Filter Size	Rated Airflow	Initial PD
		(mm)	(CMH/CFM)	(IWG/Pa)		(mm)	(CMH/CFM)	(IWG/Pa)
MERV14 / F8	CVGTP8-44	592 x 592 x 292	3400 / 2000	0.35 / 90	CVGTP8-44-6	592 x 592 x 150	1700 / 1000	0.35 / 90
MERV14 / F8	CVGTP8-04	490 x 592 x 292	2800 / 1650	0.35 / 90	CVGTP8-04-6	490 x 592 x 150	1360 / 800	0.35 / 90
MERV14 / F8	CVGTP8-00	490 x 490 x 292	2400 / 1400	0.35 / 90	CVGTP8-00-6	490 x 490 x 150	1200 / 700	0.35 / 90
MERV14 / F8	CGTP8-24	292 x 592 x 292	1700 / 1000	0.35 / 90	CGTP8-24-6	292 x 592 x 150	850 / 500	0.35 / 90
MERV15 / F9	CVGTP9-44	592 x 592 x 292	3400 / 2000	0.43 / 110	CVGTP9-44-6	592 x 592 x 150	1700 / 1000	0.43 / 110
MERV15 / F9	CVGTP9-04	490 x 592 x 292	2800 / 1650	0.43 / 110	CVGTP9-04-6	490 x 592 x 150	1360 / 800	0.43 / 110
MERV15 / F9	CVGTP9-00	490 x 490 x 292	2400 / 1400	0.43 / 110	CVGTP9-00-6	490 x 490 x 150	1200 / 700	0.43 / 110
MERV15 / F9	CVGTP9-24	292 x 592 x 292	1700 / 1000	0.43 / 110	CVGTP9-24-6	292 x 592 x 150	850 / 500	0.43 / 110
MERV16 / H10	CVGTP10-44	592 x 592 x 292	3400 / 2000	0.96 / 245	CVGTP10-44-6	592 x 592 x 150	1700 / 1000	0.96 / 245
MERV16 / H10	CVGTP10-04	490 x 592 x 292	2800 / 1650	0.96 / 245	CVGTP10-04-6	490 x 592 x 150	1360 / 800	0.96 / 245
MERV16 / H10	CVGTP10-00	490 x 490 x 292	2400 / 1400	0.96 / 245	CVGTP10-00-6	490 x 490 x 150	1200 / 700	0.96 / 245
MERV16 / H10	CVGTP10-24	292 x 592 x 292	1700 / 1000	0.96 / 245	CVGTP10-24-6	292 x 592 x 150	850 / 500	0.96 / 245

● Burst Pressure - > 5000 Pa

● Maximum Operating Temperature / Humidity - 90 ° C / 90%

All data are average indicative values with usual manufacturing and testing tolerances. We reserve the right to modify performance data without prior notices due to the constant technical improvement.

© Copyright: Every effort has been made to ensure that the information contained in this publication is accurate at the time of publishing. We assume no responsibility or liability for typographical errors or omissions or for any misinterpretation of the information within the publication and reserves the right to change without notice.