

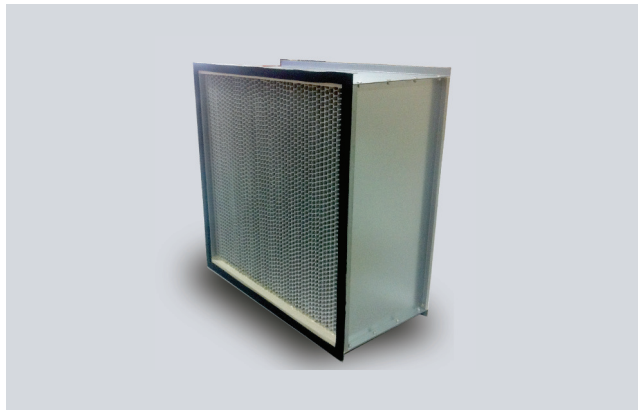
## Clairo HEPA SC & HC - Deep Pleated HEPA Filters

Clairo HEPA SC & HC are deep pleated box style filters with Aluminium Separators. It is made from micro - fine fiberglass paper media and comes with metal frames. Filters are available in H12 to U15 efficiencies. Standard models comes in 150mm and 292mm frame depth. Filters are made with Double Turn Flange Or in Box styles.

### Clairon Models

#### Clairo HEPA SC & HC

Deep Pleated box style filters  
 Available in H12, H13, H14 & U15 grades  
 Metal frame with no, single OR double header  
 Filters in 150mm and 292mm depth



### MEDIA FEATURES AND TECHNICAL DETAILS

#### Filter Media

Clairo HEPA SC & HC filters are manufactured from continuous length superior quality micro glass fiber paper media available in various efficiency grades. The filter media is moisture resistant and fire retardant. Anti-microbial treated papers are also available for special applications. The uniform and closed pleat filter pack grants a high crossing surface to hold the very fine dusts.

#### Filter Frames

The standard frame construction includes Wood Particle Board, Galvanized steel and anodized aluminium. High temperature versions are constructed with Stainless steel frames.

#### Sealant & Gaskets

The pleated media pack is encapsulated into the filter frame utilizing a two part high density fire retardant urethane elastomer. A flat profile neoprene gasket or a one-piece seamless urethane gasket is used to ensure a leak free seal to the filter housing. High temperature versions are manufactured with ceramic sealant and temperature resistant gasket.

#### Media Separators

In Clairo HEPA SC & HC filters, the pleated media is evenly and accurately positioned by corrugated aluminium separators having hemmed edges to add strength and to protect the media pack. The Clairo HEPA HT utilizes corrugated stainless steel separators.

#### Filter Testing

The finished filters undergoes a thorough quality checking. They are scan tested individually to ensure a leak proof performance and each filter posses the label showing the scan test result on it. We have testing facilities as per EN1822 and American Standard IEST-RP-CC001.3. Testing of filters can be done according to the customer's request.

### Selection Chart ▼

Filter Sizes (Inches)	Filter Size (mm)	Frame	Rated Airflow Capacity CMH @ 250 Pa		
			H13 (SC/HC)	H14 (SC/HC)	U15 (SC/HC)
12 x 24 x 6	Size: 305 x 610 x 150	Galvanized Steel / MDF / Aluminium	545 / 725	445 / 615	340 / 510
24 x 24 x 6	Size: 610 x 610 x 150	Galvanized Steel / MDF / Aluminium	1140 / 1530	935 / 1280	680 / 1020
12 x 24 x 12	Size: 305 x 610 x 292	Galvanized Steel / MDF / Aluminium	970 / 1340	810 / 1130	680 / 1020
24 x 24 x 12	Size: 610 x 610 x 292	Galvanized Steel / MDF / Aluminium	2040 / 2900	1700 / 2400	1360 / 2040

● Final Pressure Drop - 625 Pa      ● Maximum Operating Temperature / Humidity - 90 ° C / 90%

All data are average indicative values with usual manufacturing and testing tolerances. We reserve the right to modify performance data without prior notices due to the constant technical improvement.

© Copyright: Every effort has been made to ensure that the information contained in this publication is accurate at the time of publishing. We assume no responsibility or liability for typographical errors or omissions or for any misinterpretation of the information within the publication and reserves the right to change without notice.

